



# MONTHLY MEMBERSHIP PROGRESS REPORT

District 43 K

Results as of: 6/30/2017

GMT: OPEN

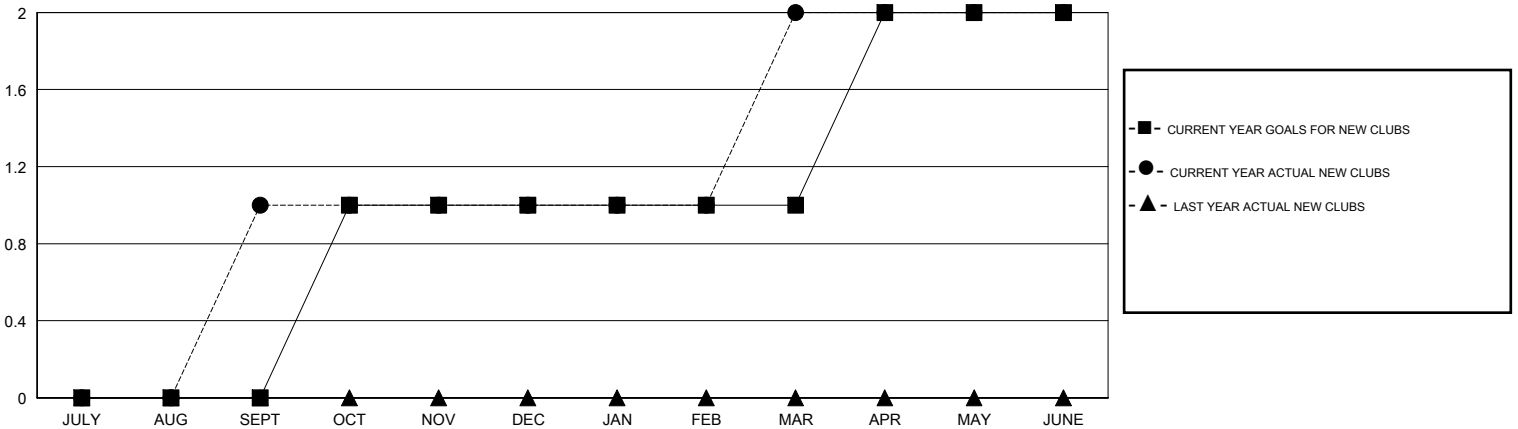
LOCATION KENTUCKY

GMT CA

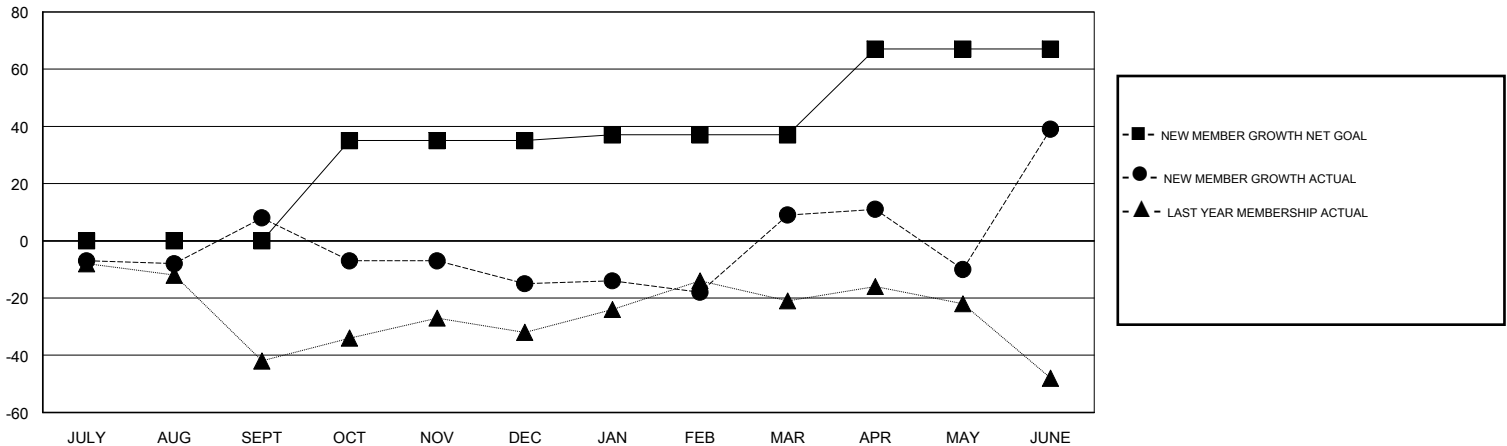
Clubs			
RESULTS FOR 2016-2017			
QUARTER	NEW CLUB GOAL	NEW CLUBS	DROPPED CLUBS
JULY/AUG/SEPT	0	1	1
OCT/NOV/DEC	1	0	0
JAN/FEB/MAR	0	1	0
APR/MAY/JUNE	1	0	1

Members			
RESULTS FOR 2016-2017			
QUARTER	NEW MEMBER GROWTH NET GOAL (not reinstated or transfers)	NEW MEMBER GROWTH ACTUAL (not reinstated or transfers)	DROPPED MEMBERS ACTUAL (including transfers)
JULY/AUG/SEPT	0	75	67
OCT/NOV/DEC	35	35	58
JAN/FEB/MAR	2	53	29
APR/MAY/JUNE	30	72	42

GOALS AND ACTUAL NEW CLUBS CUMULATIVE



GOALS AND ACTUAL MEMBERS CUMULATIVE



DROPPED CLUBS: 1	25 CLUBS OF 30 ADDED 1 OR MORE NEW MEMBERS	<b>GENDER DISTRIBUTION</b>
		MALE 655 (62.20%)
		FEMALE 398 (37.80%)
<b>DROPPED MEMBERS</b>	<a href="#">CLICK HERE FOR CUMULATIVE MEMBERSHIP DATA</a>	TOTAL FAMILY UNIT MEMBERS 188
DECEASED 6		FAMILY MEMBERS PAYING HALF DUES 96
CLUB CANCELLED 0		
OTHER 190		
<b>TOTAL 196</b>		